

1 8" PIPE ROLLER GUIDE
M-12 SCALE: 1:4

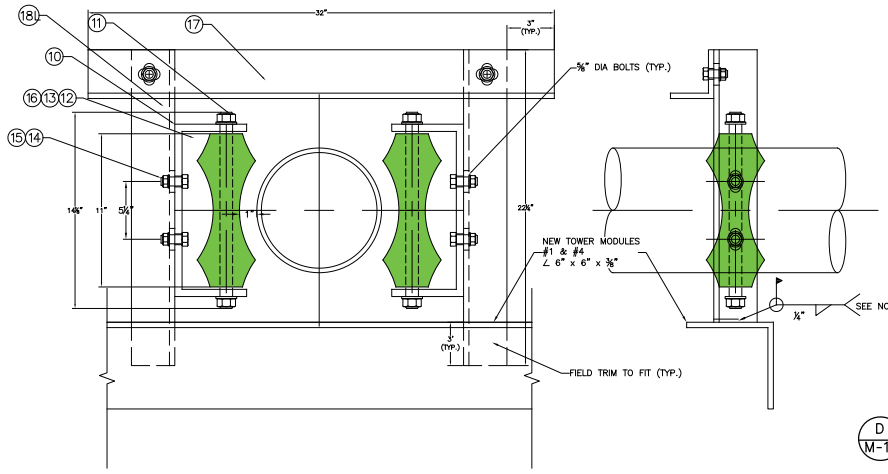
A #8 - ANGLE SLOTTED HOLE DETAIL
M-12 NTS

ITEM	QTY	TITLE	PART NUMBER	DESCRIPTION	LENGTH	MATERIAL
1	4	BEARING	BS-4024	BAR 3/4" x 2"		A36 STEEL GALVANIZED
2	4	AXIAL	BR-0820	ROUND BAR 3/4" DIA. TBE 1 1/2"	11 1/2 IN.	316 STAINLESS STEEL
3	4	ROLLER	10H	NON-CONDUCTIVE PIPE ROLLER 8 3/4" WITH SLEEVE FOR AXLE		POLYURETHANE, 318 STAINLESS STEEL SLEEVE
4	8	NUT	785G-0008	HEX NUT 3/4"		STAINLESS STEEL
5	10	STUD	755G-0006	BOLT 3/4" DIA.	1 1/2 IN.	STAINLESS STEEL
6	10	NUT	785G-0006	HEX NUT 3/4"		STAINLESS STEEL
7	8	WASHER	795G-0008	ROUND WASHER 3/4"		STAINLESS STEEL
8	1	ANGLE		L 3" x 3" x 3/8"	28 1/2 IN.	A36 STEEL GALVANIZED
9L	1	ANGLE		L 3" x 3" x 3/8"	22 1/2 IN.	A36 STEEL GALVANIZED

* BILL OF MATERIALS ABOVE PER ONE ASSEMBLED UNIT
* 9L IS OPPOSITE OF 9R

B #9R - ANGLE SLOTTED HOLE DETAIL
M-12 NTS

- NOTES:
- A36 STEEL MEMBERS TO BE HOT DIPPED GALVANIZED IN SHOP PRIOR TO ASSEMBLY
 - BEFORE ASSEMBLY OF STAINLESS STEEL AXLE TO STAINLESS STEEL SLEEVE ADD AXLE GREASE
 - FIELD WELD BEARING BAR AND BASE PLATE, THEN ADD GALVONOX AFTER COMPLETION OF WELD
 - ENTIRE PIPE SUPPORT AFTER ASSEMBLY MAYBE COATED SAME AS PIPELINE, CONTRACTOR'S OPTION



2 TOWER ROLLER PIPE GUIDE
M-12 SCALE: 1:4

C #8 - ANGLE SLOTTED HOLE DETAIL
M-12 NTS

ITEM	QTY	TITLE	PART NUMBER	DESCRIPTION	LENGTH	MATERIAL
10	2	BEARING	BS-4024	BAR 1/2" x 2"		A36 STEEL GALVANIZED
11	2	AXIAL	BR-0820	ROUND BAR 3/4" DIA. TBE 1 1/2"	14 1/2 IN.	316 STAINLESS STEEL
12	2	ROLLER	10H	NON-CONDUCTIVE PIPE ROLLER 11" WITH SLEEVE FOR AXLE		POLYURETHANE, 316 STAINLESS STEEL SLEEVE
13	4	NUT	785G-0008	HEX NUT 3/4"		STAINLESS STEEL
14	6	STUD	755G-0006	BOLT 3/4" DIA.	1 1/2 IN.	STAINLESS STEEL
15	6	NUT	785G-0006	HEX NUT 3/4"		STAINLESS STEEL
16	4	WASHER	795G-0008	ROUND WASHER 3/4"		STAINLESS STEEL
17	1	ANGLE		L 3" x 3" x 3/8"	32 IN.	A36 STEEL GALVANIZED
18R	1	ANGLE		L 3" x 3" x 3/8"	22 1/2 IN.	A36 STEEL GALVANIZED
18L	1	ANGLE		L 3" x 3" x 3/8"	22 1/2 IN.	A36 STEEL GALVANIZED

* BILL OF MATERIALS ABOVE PER ONE ASSEMBLED UNIT
* 18L IS OPPOSITE OF 18R

D #18R - ANGLE SLOTTED HOLE DETAIL
M-12 NTS