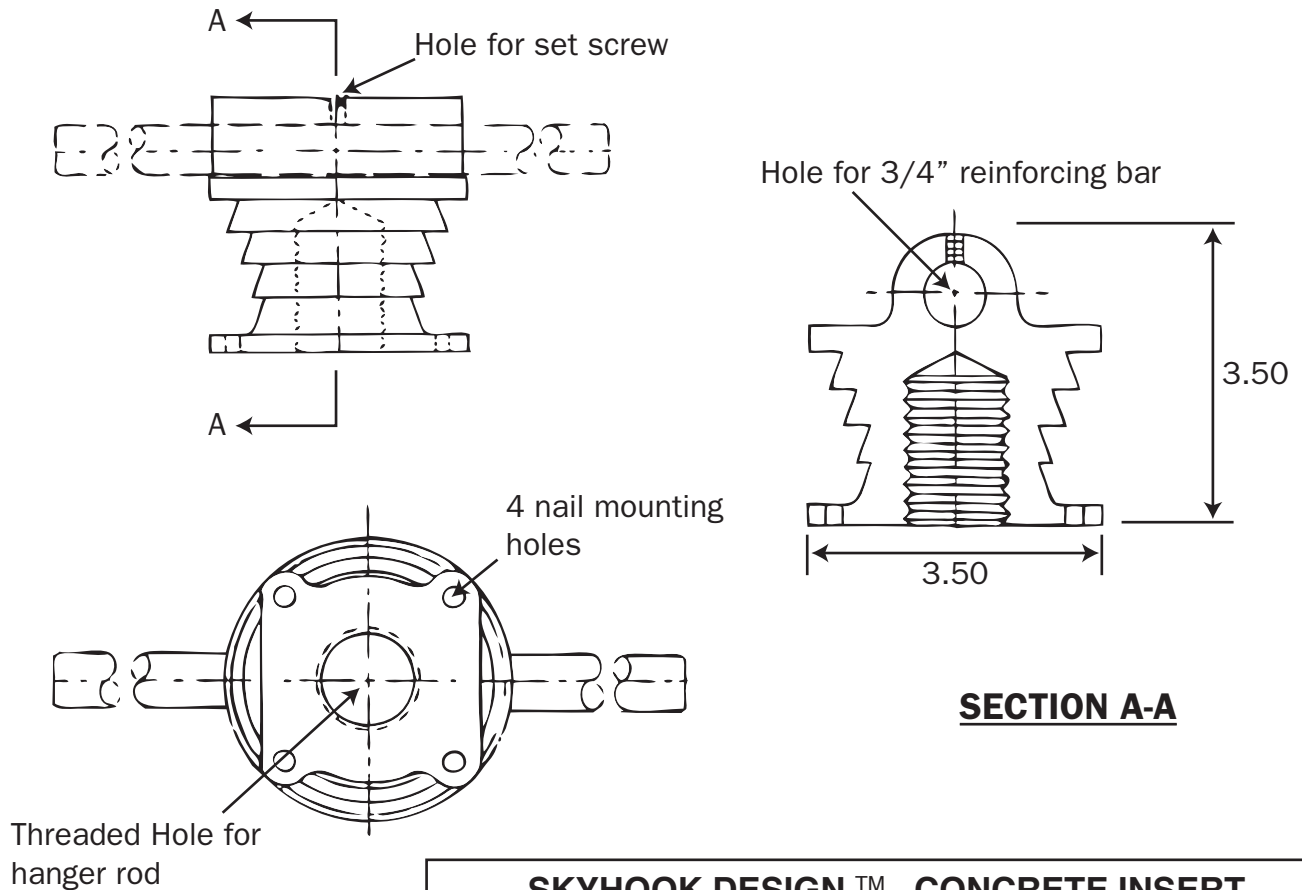


SKYHOOK DESIGN™ CONCRETE INSERT



SKYHOOK DESIGN™ CONCRETE INSERT
Design by Linn Brown **Patent No. 362,177**

ADVANTAGES & IMPROVEMENTS:

- Solid one piece constructions, compact design, cast 304 or 316 stainless steel.
- Single 3/4" diameter x 12" long stainless steel or fiberglass reinforcing bar (included).
- Longer and stronger thread engagement for rods of 3/4" to 1 1/2".
- Rings of "Barracuda" teeth around wedge shaped body for superior anchoring.
- Complete protection of tapped rod hole for poured concrete.

THREADED ROD DIAMETER	■ MAXIMUM LOAD (lbs.)
3/4"	3,600
7/8"	6,000
1"	8,000
1 3/4"	13,200
1 1/2"	18,000

- Based on rod diameter only. Rating is subject to conditions that the concrete used is of sufficient strength to hold insert. Values do not reflect concrete *shear strength.
 * Force required to pull out or separate the insert from the concrete.
 Maximum load based on two rod hanger.