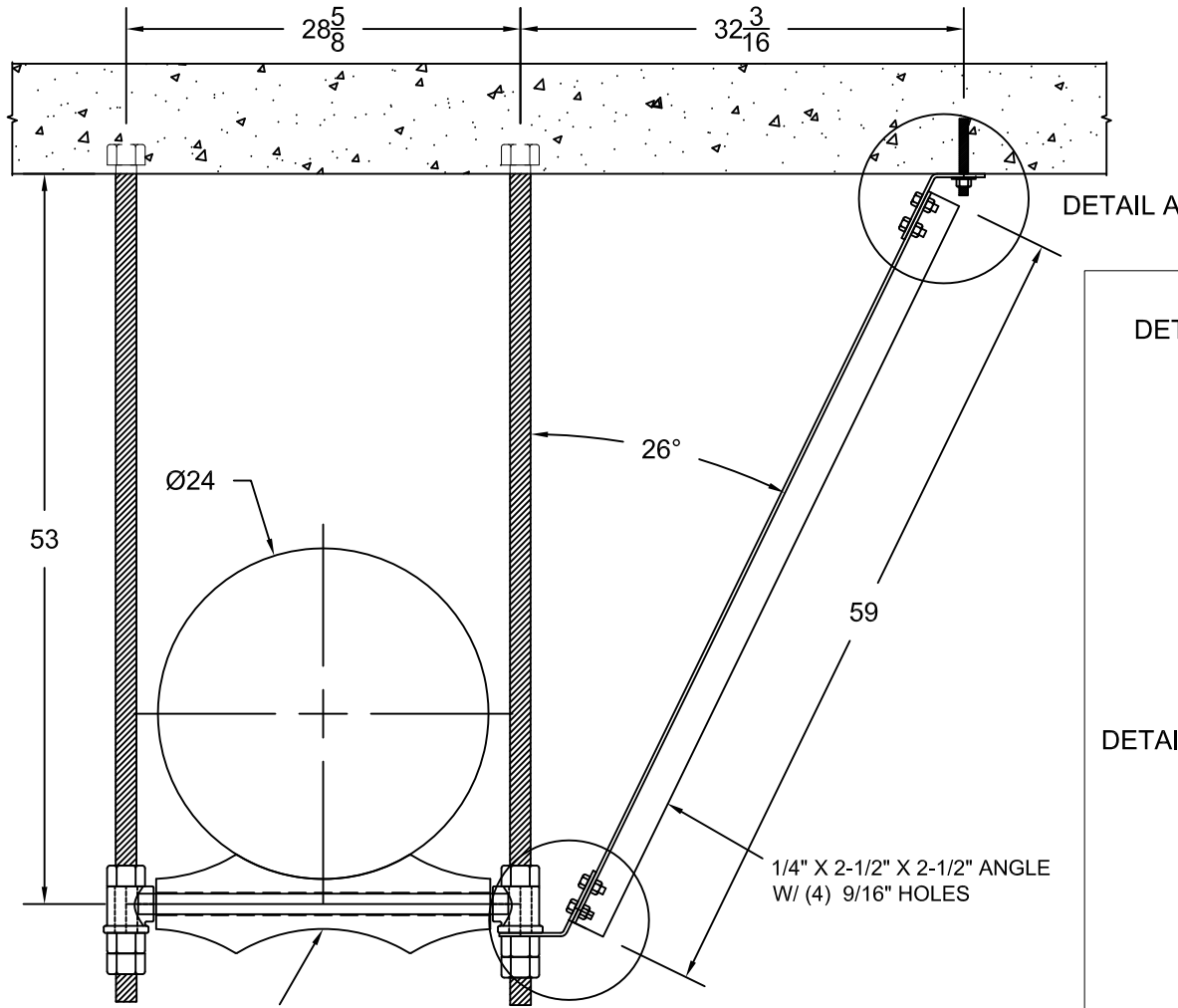
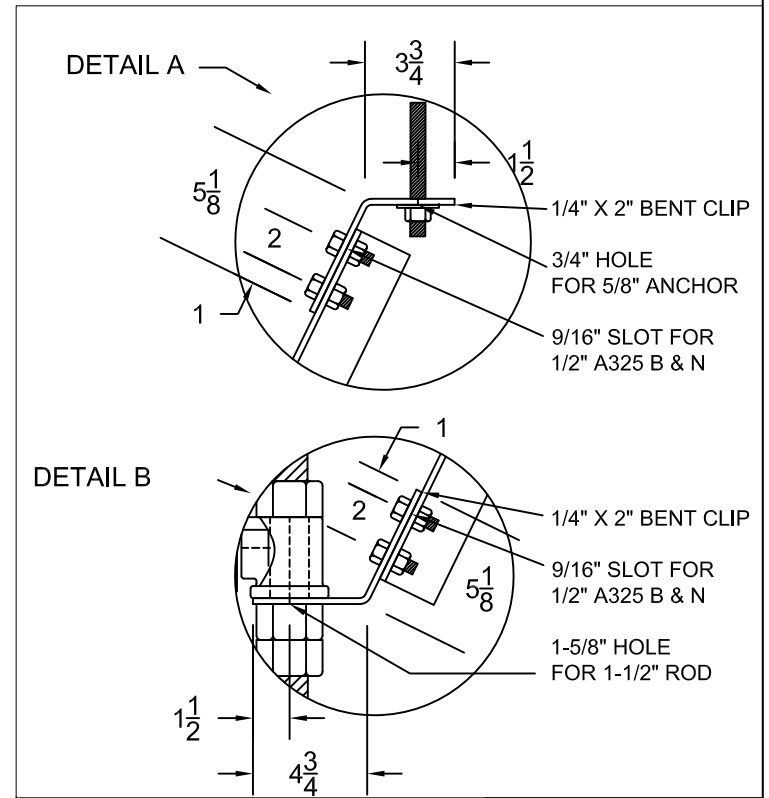


APPROVED BY: _____

DATE: _____



DETAIL A



24" NON CONDUCTIVE
ROLLER W/ 1-1/2" RODS

DETAIL B

1/4" X 2-1/2" X 2-1/2" ANGLE
W/ (4) 9/16" HOLES

SPECIAL ITEMS ARE NON-RETURNABLE

SPECIAL ITEM DESCRIPTION

DETAIL 2 24" WATERMAIN SUPPORT LATERAL BRACE

CUSTOMER

JOB

NEPTUNE CARGIL OVERPASS

NO.	REVISION	DATE

INFORMATION CONTAINED
HEREIN IS THE CONFIDENTIAL
PROPERTY OF LINN BROWN &
ASSOCIATES AND MUST NOT BE
DISCLOSED OR REPRODUCED
WITHOUT PRIOR WRITTEN
PERMISSION.

FINISH

H D GALV

UNIT QTY.

17

LINN BROWN & ASSOC.

1085C Andrew Drive

West Chester, PA 19380

610-696-9220 Phone

610-344-7519 Fax

DRAWN BY

MS

DATE

3/4/11

CHECKED BY

SCALE

Y

P.O. NO.

DWG. NO.

030414A

REV.

0 0

TAG