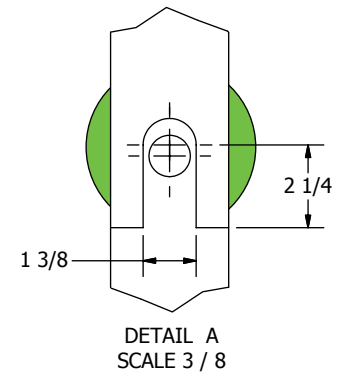
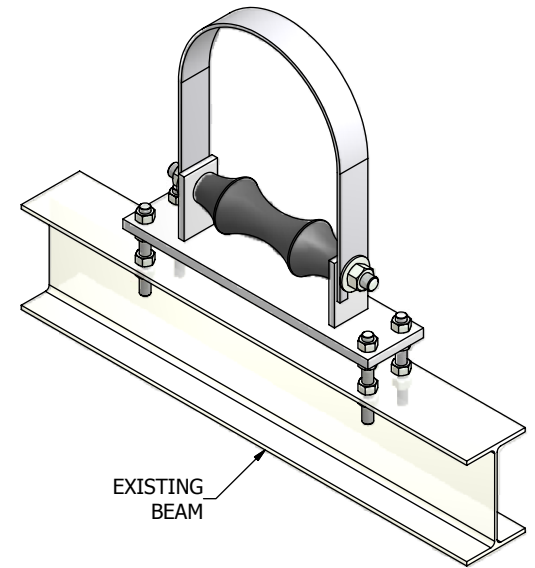
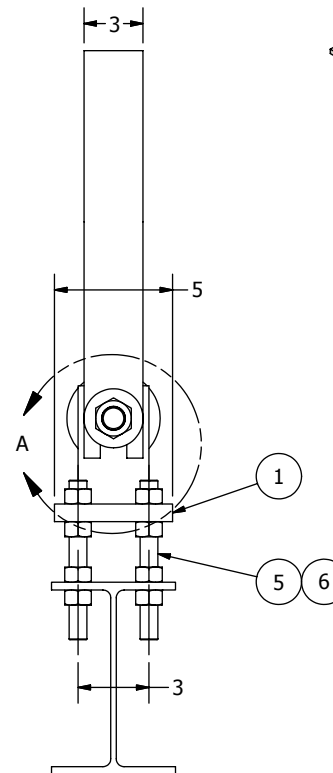
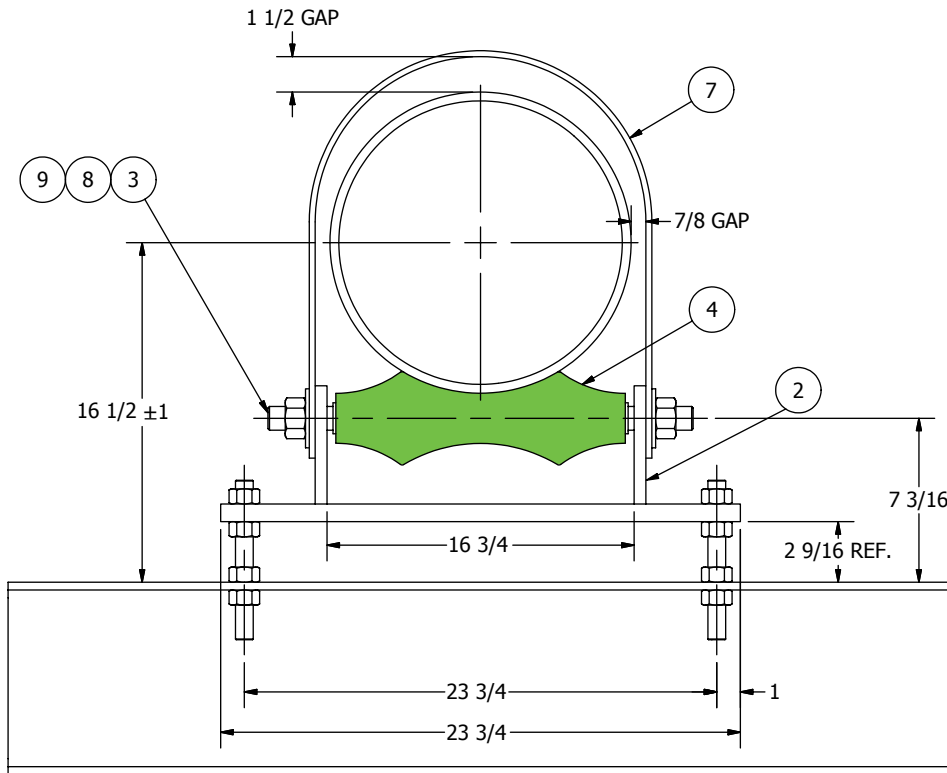


ITEM	QTY	TITLE	PART NUMBER	DESCRIPTION	LENGTH	WEIGHT EA. (lbf)	FINISH
1	1	BASE	BS-8040	FLAT STOCK 1" x 5"	25 3/4 in	35.97	
2	2	BEARING	BS-4024	FLAT STOCK 1/2" x 3"	5 in	1.92	
3	1	AXIAL	BR-1020	ROUND BAR 1-1/4"	22 in	7.66	E.G.
4	1	ROLLER	16H	NON-CONDUCTIVE PIPE ROLLER 16"		7.19	
5	4	STUD	755G-0006	THREADED ROD 3/4"	6 3/4 in	0.85	E.G.
6	16	NUT	785G-0006	HEX NUT 3/4"		0.14	E.G.
7	1	STRAP	BS-2024	FLAT STOCK 1/4" x 3"	51 1/2 in	10.43	
8	2	WASHER	795G-0010	FLAT WASHER 1-1/4"		0.26	E.G.
9	2	NUT	790G-0010	HEAVY HEX NUT 1-1/4"		0.77	E.G.



NOTES:

1. MAXIMUM RECOMMENDED LOAD = 1,800 lbf.
2. STRAP (ITEM 7) TO BE COATED WITH POLYOLEFIN.

DESCRIPTION 16" ADJUSTABLE PIPE ROLLER STAND						
LINN BROWN & ASSOCIATES, INC.					JOB	
DRAWN BY JTOY	CHECKED BY GR	SCALE NTS	ORDER NO.	DRAWING NO. RLR16	SHEET 1 OF 4	REV. TAG 1

LB&A, INC
LINN BROWN & ASSOCIATES
 A UTILITY SERVICE COMPANY