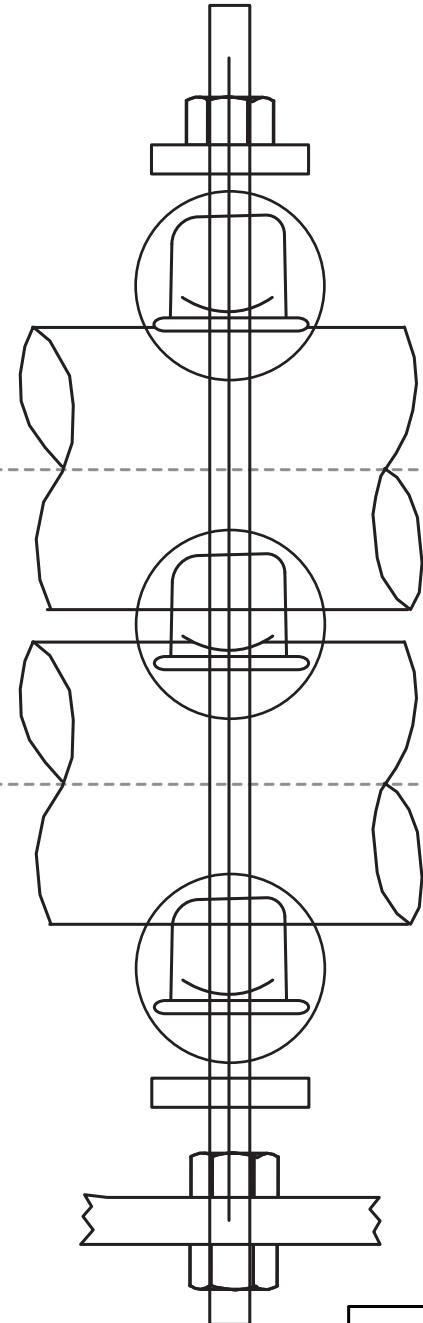
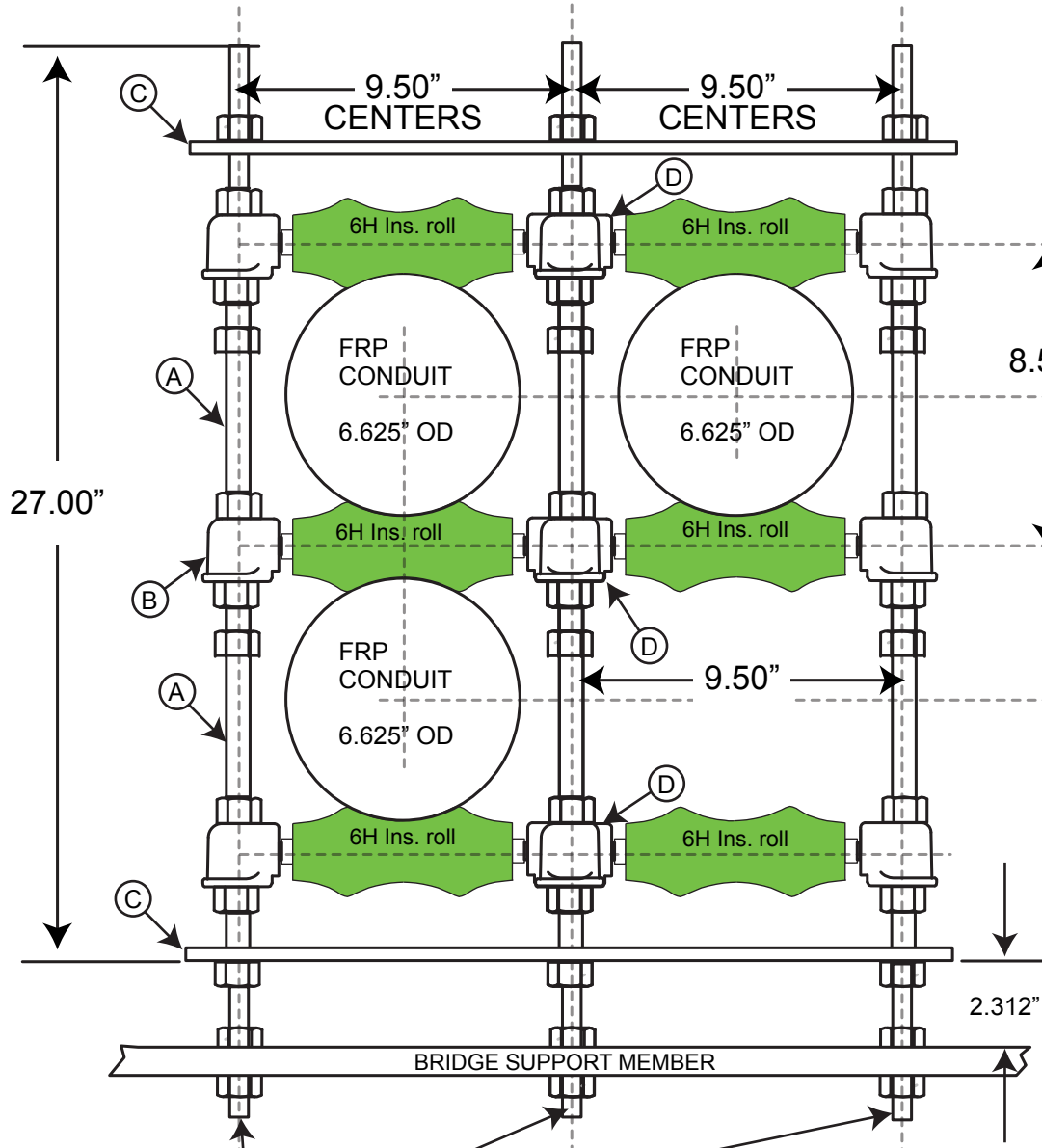
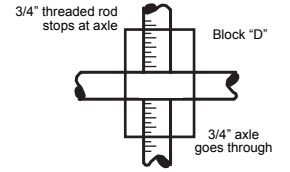


NOTE: Axles pass through the steel blocks "D", the center rods are cut into sections and threaded into the steel blocks.

- A - FRP round tube 1" OD x 1/8" wall x 6.25" L
- B - #4 socket 3/4" x 3/4"
- C - FRP flattie 2" x 1/2" x 21.50" L
- D - Steel Block 2" x 2" x 3" L



3/4" THREADED ROD Z.P. WITH NUTS

LB & A, INC.	
CUSTOM CONDUIT HANGER	
DATE	SCALE NONE
DRAWN BY	DWG NO. 4CONAa